

Daniel Power

From: Vander Kodde, Jason T. <jtvanderkodde@ftch.com>
Sent: Friday, August 24, 2018 9:04 AM
To: Daniel Power
Cc: David Gilmore (david.gilmore@meijer.com); Barton, Nathaniel A.; Wieringa, Kevin
Subject: Meijer Gas Station 615 FASP Request #2B
Attachments: 615_C801-C801.pdf; IMG_7236.jpg

Good Morning Dan,

Thank-you for taking my call this morning.

Attached please find our current Tesla and ChargePoint Electric Vehicle planning sheet.

(Here is a photo of a ChargePoint unit I took in Holland yesterday.)

As I mentioned, these units will not be installed until later this fall, but we are placing underground conduit for them this week.

This will allow us to finish sodding and sprinkling and landscaping for our store opening.

We will landscape the Tesla equipment pad as discussed, and provide detailed drawings with that electrical permit application.

Jason

Jason Vander Kodde, PE | Associate | Senior Engineer | 616.464.3938 | www.ftch.com
Fishbeck, Thompson, Carr & Huber, Inc. | Engineers, Scientists, Architects, Constructors

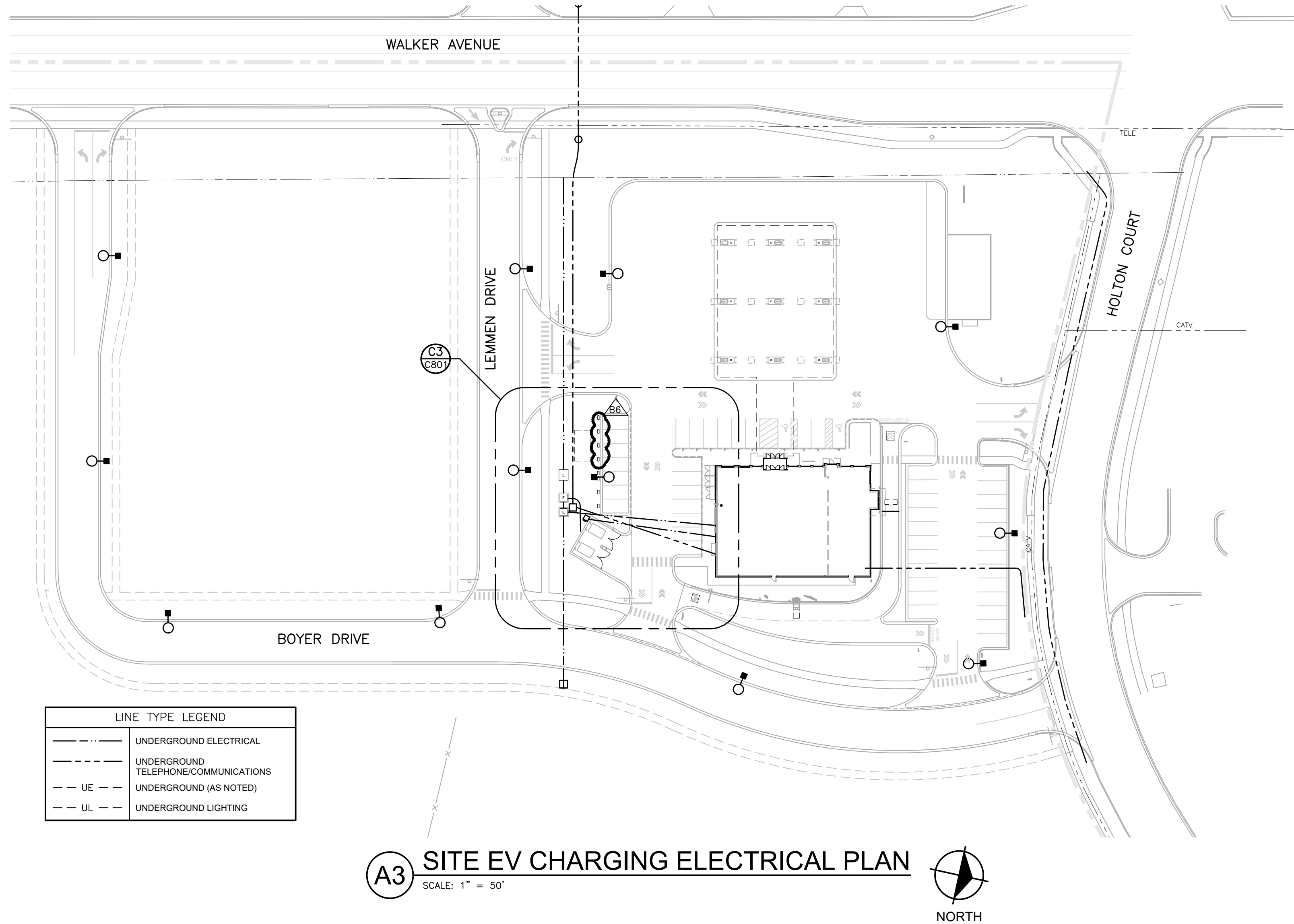
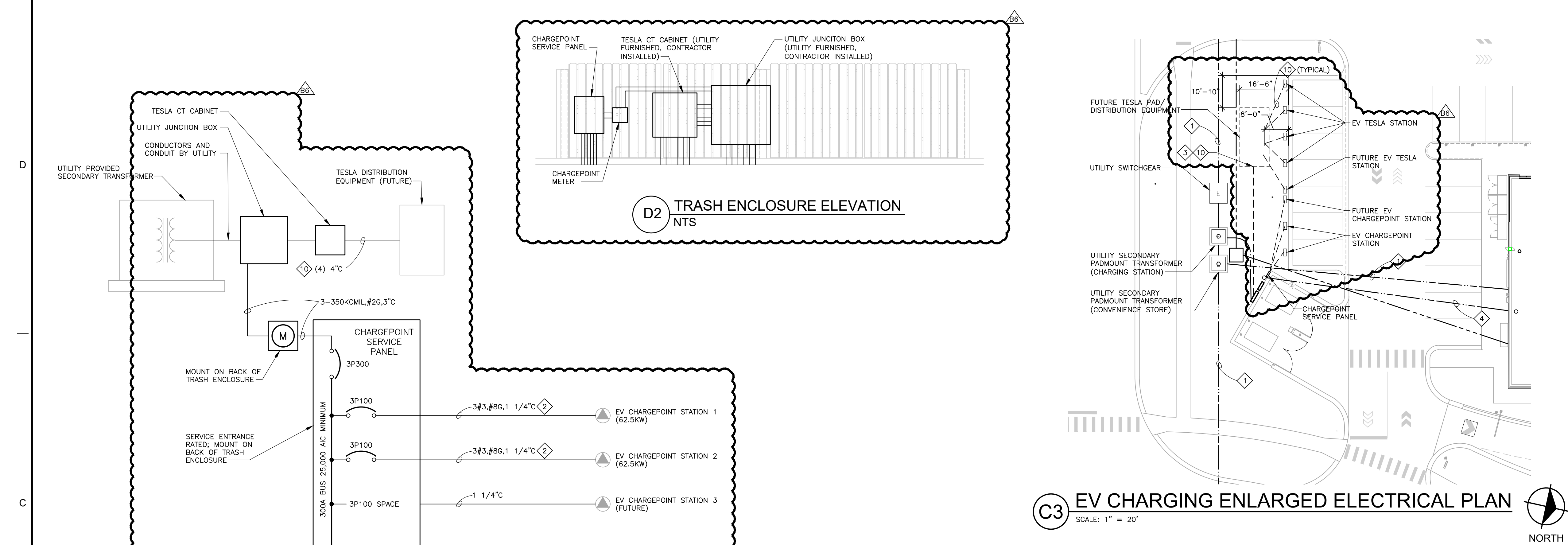
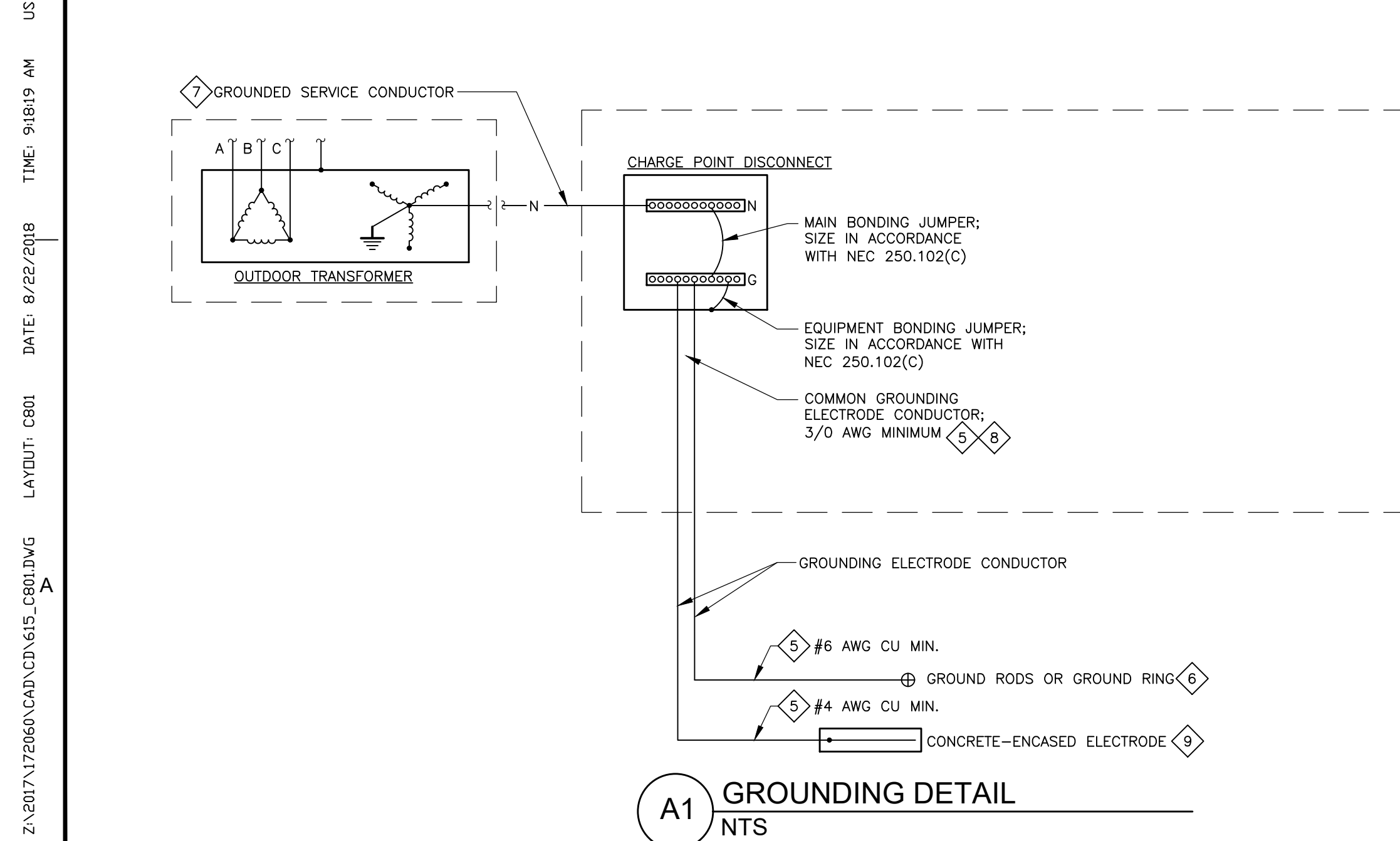
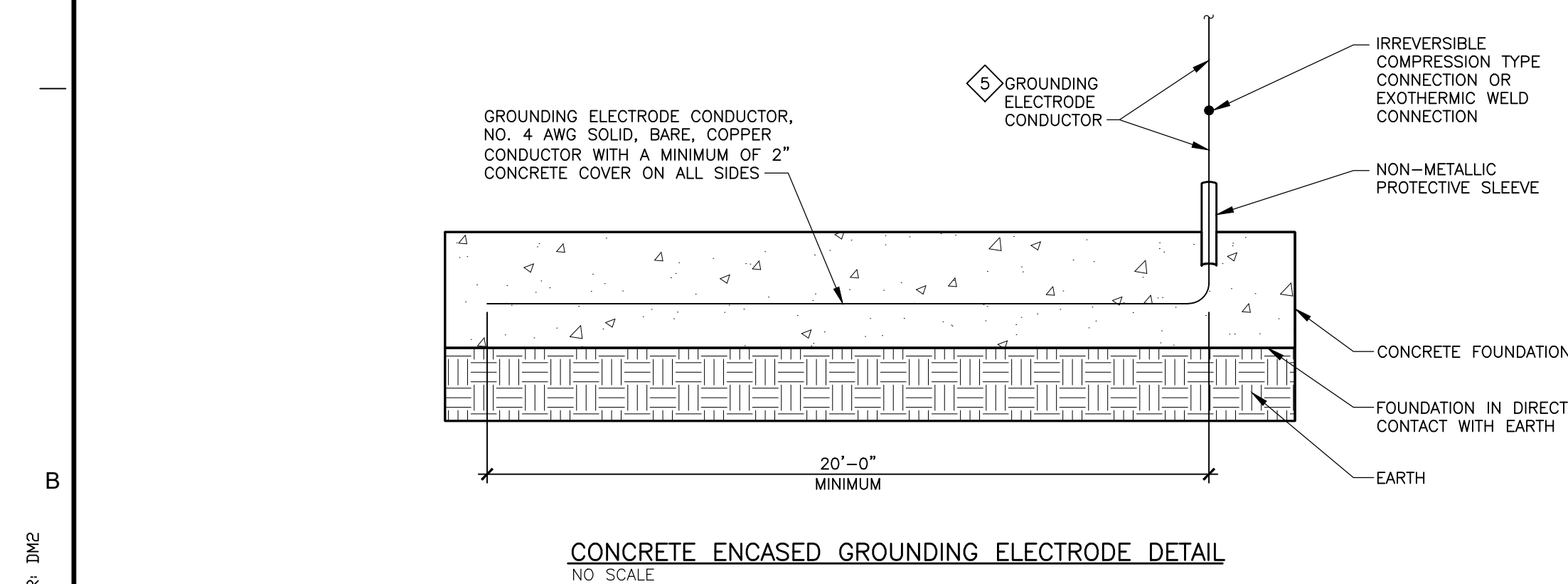
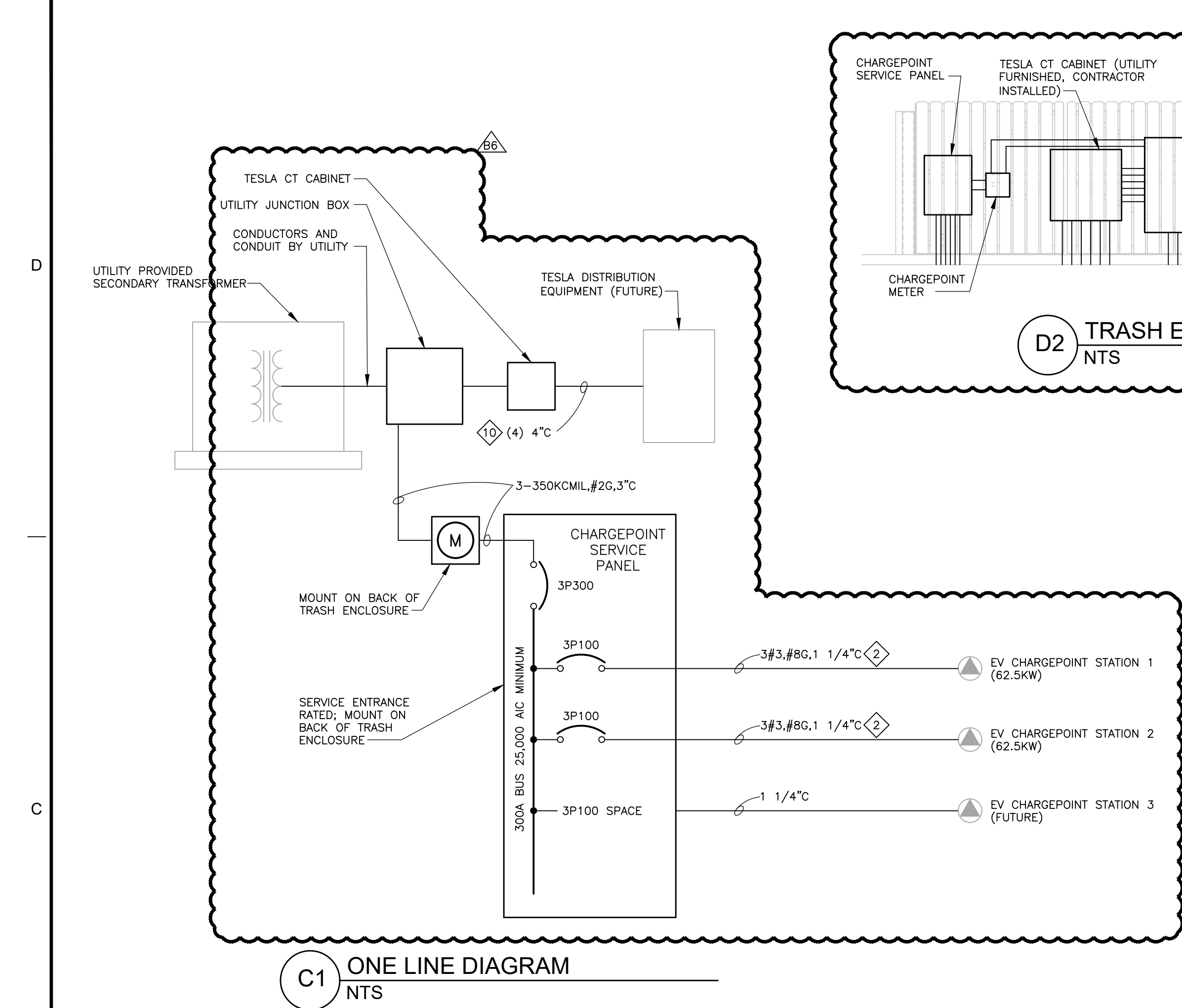
From: Mbekenga, Diomedes L.
Sent: Wednesday, August 22, 2018 9:24 AM
To: Gilmore, David <David.Gilmore@meijer.com>; Vander Kodde, Jason T. <jtvanderkodde@ftch.com>; Kuhtz, Anthony <arkuhtz@FTCH.com>
Subject: RE: 615 Walker GS EV drawing

Dave,

Here is the updated drawing with an updated bulletin date.

Thanks,

Dio Mbekenga | Electrical Engineer | 616.464.3846 | www.ftch.com
Fishbeck, Thompson, Carr & Huber, Inc. | Engineers, Scientists, Architects, Constructors



- ## NOTES
1. CONDUITS IN GRASS AREAS SHALL BE BURIED 1'-6" MINIMUM BELOW FINISHED GRADE WITH WARNING TAPE 6" ABOVE CONDUIT UNLESS NOTED OTHERWISE.
 2. CONDUITS BELOW PAVEMENT SHALL BE BURIED 2'-0" MINIMUM UNDER BASE COURSE OF PAVEMENT.
 3. ROUTE CONDUITS TO AVOID UTILITY AND PLANTING LOCATIONS.
 4. COORDINATE LOCATION OF CONDUITS WITH UTILITY COMPANY. PRIOR TO LAY, PULL WIRE AND MEASURED FULLY STRING IN EACH CONDUIT. ALL 90° ELBOWS SHALL BE GALVANIZED STEEL LONG SWEEP BENDS.
 5. LIGHTING WITHIN THE PAVEMENT AREA IS TO BE CENTERED ON A PARKING STRIPE INTERSECTION AND PERIMETER POLE LIGHTS ARE TO BE CENTERED AT 5' FT. BACK OF PAVEMENT.
 6. EXTEND CIRCUIT CONDUITS AND WIRE TO FRONT OF STORE DISTRIBUTION/CONTROLS LOCATION. SEE BUILDING DRAWINGS FOR DETAILS.
 7. DO NOT ROUTE ANY ELECTRICAL CONDUITS WITHIN 20 FEET OF ANY FUEL DISPENSER, OR WITHIN 10 FEET OF ANY BURIED FUEL TANK, OR 5 FEET OF FUEL TANK AIR VENT PIPES.

- ## KEY NOTES
1. SEE SHEET C800 FOR CONDUIT SIZE.
 2. CONDUCTORS AND IN LINE FUSING SHALL BE INSTALLED WHEN CHARGE POINT DISPENSER IS INSTALLED.
 3. SEE ONE LINE DIAGRAM FOR QUANTITY/SIZE OF CONDUITS.
 4. 2" EVC COMMUNICATIONS CONDUIT. SWEEP CONDUIT UP AND CAP. PROVIDE FULL PULL ROPE.
 5. INSTALL GROUNDING ELECTRODE CONDUCTOR IN SCHEDULE 40 PVC CONDUIT. SIZE CONDUCTOR IN ACCORDANCE WITH NEC TABLE 250.66.
 6. GROUND GRID RESISTANCE SHALL BE 5 OHMS OR LESS. PROVIDE ADDITIONAL GROUND RODS AS REQUIRED.
 7. SEE ONE LINE DIAGRAM FOR CONDUCTOR SIZE.
 8. THE SIZE OF THE COMMON GROUNDING ELECTRODE CONDUCTOR IS BASED ON THE TOTAL CIRCULAR MIL AREA OF THE SECONDARY PHASE CONDUCTORS FROM ALL THE SEPARATE DERIVED SYSTEMS THAT WILL BE CONNECTED TO THE COMMON GROUNDING ELECTRODE CONDUCTOR AND TABLE 250.66.
 9. SEE CONCRETE ENCASED GROUNDING ELECTRODE DETAIL.
 10. COORDINATE CONDUIT STUB UP LOCATION WITH TESLA DESIGN PLANS. IF PLANS ARE NOT AVAILABLE, STUB AND CAP CONDUITS JUST INSIDE THE EDGE OF THE TESLA EQUIPMENT SLAB. STUBBED CONDUITS SHALL BE FIELD WAGED TO A FLANGE TO COMMUNICATING THEIR LOCATION TO THE TESLA INSTALLATION CONTRACTOR.

HYBRID
VEHICLE
PARKING
ONLY

